

PART OF THE SE.1/4, OF SECTION 22, T.7N., R.1E., S.L.B. & M.
CASCADES AT MOOSE HOLLOW CONDOMINIUM PHASE 3

IN WEBER COUNTY
 SCALE 1" = 30'

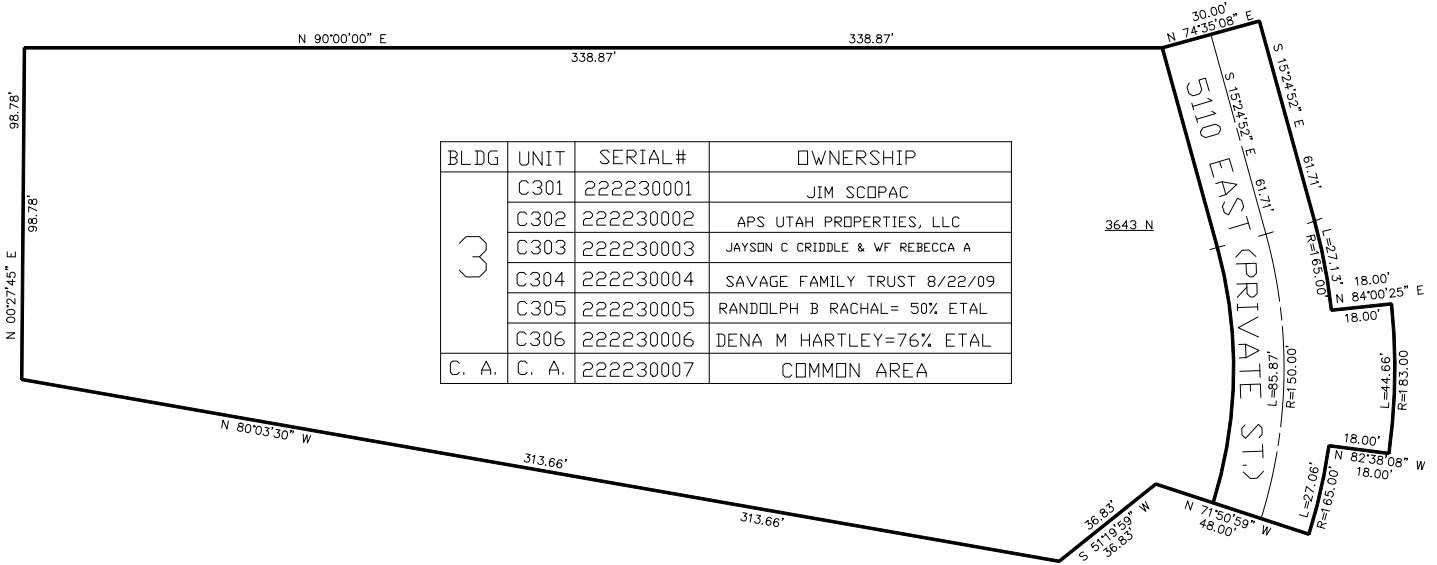
TAXING UNIT: 203

SEE PAGE 16

*FOR HUNTSMAN PATH SEE DED. PLAT

SEE PAGE 16

SEE PAGE 224



BLDG	UNIT	SERIAL#	OWNERSHIP
3	C301	222230001	JIM SCDPAC
	C302	222230002	APS UTAH PROPERTIES, LLC
	C303	222230003	JAYSON C CRIDDLE & WF REBECCA A
	C304	222230004	SAVAGE FAMILY TRUST 8/22/09
	C305	222230005	RANDOLPH B RACHAL= 50% ETAL
	C306	222230006	DENA M HARTLEY=76% ETAL
C. A.	C. A.	222230007	COMMON AREA

SEE PAGE 198

FOR COMPLETE ENG DATA SEE ORIGINAL DEDICATION PLAT IN BOOK 60, PAGE 99-101 OF RECORDS.

FOR TAX PURPOSES ONLY